



ALICANTO  
MINERALS LIMITED

# A Regional Scale Gold Project

Guyana | South America

North American Roadshow Presentation - March 2016

ASX Code | AQI



# Presentation Disclaimer



## General Information & Disclaimer

This presentation has been prepared for the purposes of providing information to the recipient regarding Alicanto Minerals Limited (**Alicanto** or the **Company**). It does not, and does not purport to, contain all the information that the recipient may require to evaluate the Company. It should be read in conjunction with Alicanto's other periodic and continuous disclosure announcements, which are available at [www.asx.com.au](http://www.asx.com.au).

No representation or warranty is given as to, and the recipient must not rely on, any information, statement or opinion contained in this presentation, or its accuracy, reasonableness or completeness. Except for statutory liability which cannot be excluded, each of Alicanto, its affiliates, directors, employees, advisers and agents expressly disclaims any responsibility for the accuracy or completeness of the material contained in this presentation and excludes all liability whatsoever for any loss or damage of any kind arising as a result of the use of, or reliance on, the information in this presentation.

This presentation does not take into account the investment objectives, financial situation or particular needs of any investor, potential investor or any other person. No investment decision should be made in reliance on this presentation. Independent financial and taxation advice should be sought before making any investment decision.

## Forward Looking Statements

This presentation may contain certain forward looking statements and projections regarding: estimated, resources and reserves; planned production and operating costs profiles; planned capital requirements; and planned strategies and corporate objectives.

Forward-looking statements are subject to a variety of known unknown risks, uncertainties and other factors that could cause actual events or results to materially differ from those reflected in the forward- looking statements, including, without limitation: inherent uncertainties and risks associated with mineral exploration; uncertainties related to the availability of future financing necessary to undertake activities on Alicanto's properties; uncertainties related to the possible recalculation of, or reduction in Alicanto's minerals resources; uncertainties related to the outcome of studies; uncertainties relating to fluctuations in gold prices; the risk that Alicanto's title to its properties could be challenged; risks related to Alicanto's ability to attract and retain qualified personnel, uncertainties related to general economic and global financial conditions; uncertainties related to the competitiveness of the industry; risk associated with Alicanto being subject to government regulation, including changes in regulation; risks associated with Alicanto being subject to environmental laws and regulations, including a change in regulation; risks associated with Alicanto's need for governmental licenses, permits and approvals; uninsured risks and hazards; risk related to the integration of businesses and assets acquired by Alicanto; risk associated with Alicanto having no history of earnings or production revenue; risks associated with fluctuation in foreign exchange rates; risks related to default by joint venture parties (if any), contractors and agents, inherent risks associated with litigation; risk associated with potential conflicts of interest; risk related to effecting service or process on directors resident in foreign countries; uncertainties related to Alicanto's limited operating history; risks related to Alicanto's lack of a dividend history; risks relating to short term investments; and uncertainties related to fluctuations in Alicanto's share price.

Alicanto's forward-looking statements are based on the assumptions, beliefs, expectations and opinions of management as of the date hereof and which Alicanto believes are reasonable in the circumstances, but no assurance can be given that these expectations will prove to be correct. These assumptions include but are not limited to that Alicanto's exploration of its properties and other activities will be in accordance with Alicanto's public statements and stated goals, that there will be no material adverse change affecting Alicanto or properties, anticipated costs and timing for Alicanto's activities and such other assumptions as set out herein.

Such forward looking statements/projections are estimates for discussion purposes only and should not be relied upon. They are not guarantees of future performance and involve known and unknown risks, uncertainties and other factors many of which are beyond the control of the Company. The forward looking statements/projections are inherently uncertain and may therefore differ materially from results ultimately achieved.

The Company does not make any representations and provides no warranties concerning the accuracy of the forward looking statements, and disclaims any obligation to update or revise any forward looking statements based on new information, future events or otherwise except to the extent required by applicable laws.

## Competent Persons Statement

The information in this report that relates to Exploration Results is based on information compiled by Mr Marcus Harden, a Competent Person who is a Member of The Australian Institute of Geoscientists. Mr Harden is a full time employee as Chief Geologist for the company. Mr Harden has sufficient experience that is relevant to the style of mineralisation and type of deposits under consideration and to the activity being undertaken to qualify as a Competent Person as defined in the 2012 Edition of the 'Australasian Code for Reporting of Exploration Results, Mineral Resources and Ore Reserves'. Mr Harden consents to his inclusion in the report of the matters based on his information in the form and context in which it appears.



# Guyana

## Highly prospective and underexplored



- Geological continuity between Guiana Shield and West Africa
- West Africa is host to over 275Moz Au - substantial portion discovered in last 15 years attributed to modern exploration

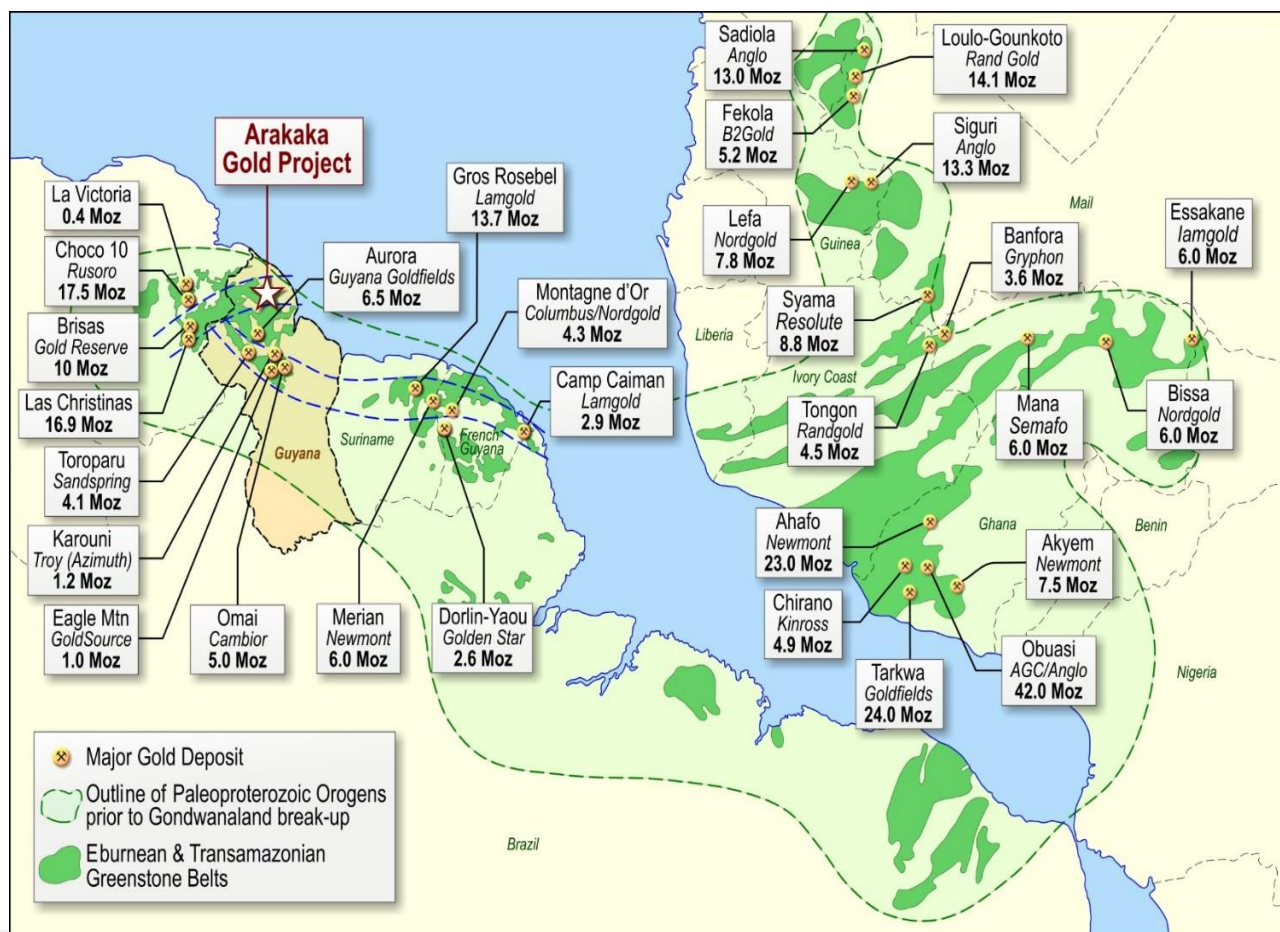
***Guiana Shield is VERY underexplored relative to West Africa***

Guyana host to recent discoveries and substantial mine development  
**Two mines declaring commercial production in 2016;**

- Aurora Deposit (Guyana Goldfields)  
**2.8moz Au @ 2.94g/t Au Reserve**  
 188koz pa w/ AISC of US\$661/oz
- Karouni Deposit (Troy Resources)  
 633koz Au @ 4.13g/t Au  
 90koz pa w/ AISC of US\$805/oz

**<1 year timelines for Environmental Permitting and Licencing**

- Strong Mining Culture
- Social Licence to Operate
- +400koz pa artisanal production
- Gold is Guyana's largest export



# Arakaka Gold Project Highlights

- Acquisition has delivered an exceptional brownfields project, rated as one of the best in Guyana
- Located on World Class Guiana Shield Terranes host to >100 million ounces Gold endowment
- Footprint of Alluvial Workings analogous to 26.9moz Las Cristinas/Las Brisas & 13.7moz Gros Rosebel gold deposits

## Regional Scale Project with potential to deliver a World Class Gold District

- **Multiple >1Moz Potential Prospects**
- **4 Extensive Mineralised Structural Corridors**
- **>40 Strike Kilometres of Targets**
- **<5% Drill Tested**
- **Over US\$20m in Previous Exploration**
- **+1Moz Au Historical Production**
- **Existing Camp/Access and Infrastructure**
- **Modern Exploration in its Infancy**
- **Favourable Structural & Geological Setting**
- **No Social or Native Cultural Issues Identified**

## Excellent platform for discovery in next steps of exploration

- Good Infrastructure, all-season road network, daily flights, 15km from deep water port
- **Guyana** - Mining friendly Government, Open to foreign Investment  
English speaking, British Common Law,  
Corporate tax rate 30% and Govt. Gold Royalty 5-8%





# Earn-in with Barrick Gold Corporation

## Key Terms



Barrick has the option to earn-in to a 65% interest in the Arakaka Gold Project based on meeting total funding requirements of \$10.0 million USD, including;

- US\$1.8m minimum contribution by 31 December 2016, counted towards a total;
  - US\$8.0m exploration expenditure over four years; and
  - US\$2.0m cash paid to Alicanto at completion of earn-in expenditure
- 
- Alicanto to remain the operator during the first two years overseeing anticipated exploration expenditure of up to \$4,000,000 USD
  - Barrick will have voting control of the steering committee and will provide final approval of agreed exploration programmes
  - If Barrick terminates prior to completion of the \$10m USD contribution they will forfeit all rights and interest to the Arakaka Gold Project
  - If Barrick completes the \$10m USD contribution, an Arakaka JV is formed and then Alicanto must either;
    - Contribute costs on a proportional basis to retain its 35% interest; or
    - Go to 15% Free Carry by way of a straight line dilution mechanism
  - Upon a notice of decision to mine by the Arakaka JV, Alicanto can elect to either contribute, or convert its interest in the project to a 2% net smelter royalty

*Note: Refer to Alicanto News Release to the ASX dated 1 March 2016 for additional information*

# Current Work Plan

## US\$1.8m Expenditure Requirement

*Subject to Barrick/Alicanto Steering Committee Review and Approval;*

- Stream Sediment Sampling Programs
- Drilling Campaign to commence as soon as practicable
- Trench Sampling across Alicanto Soil & Auger Anomalies
- Structural Analysis Study with detailed surface Rock Chip Program
- Follow-up RC and/or Diamond Drilling Programs to test continuity of mineralisation on best existing targets

*Results Pending*

*Proposed - June Quarter*

*Proposed - June Quarter*

*Ongoing, into June Quarter*

*Proposed - Sept Quarter*





# Arakaka Project

## Good Access and Infrastructure

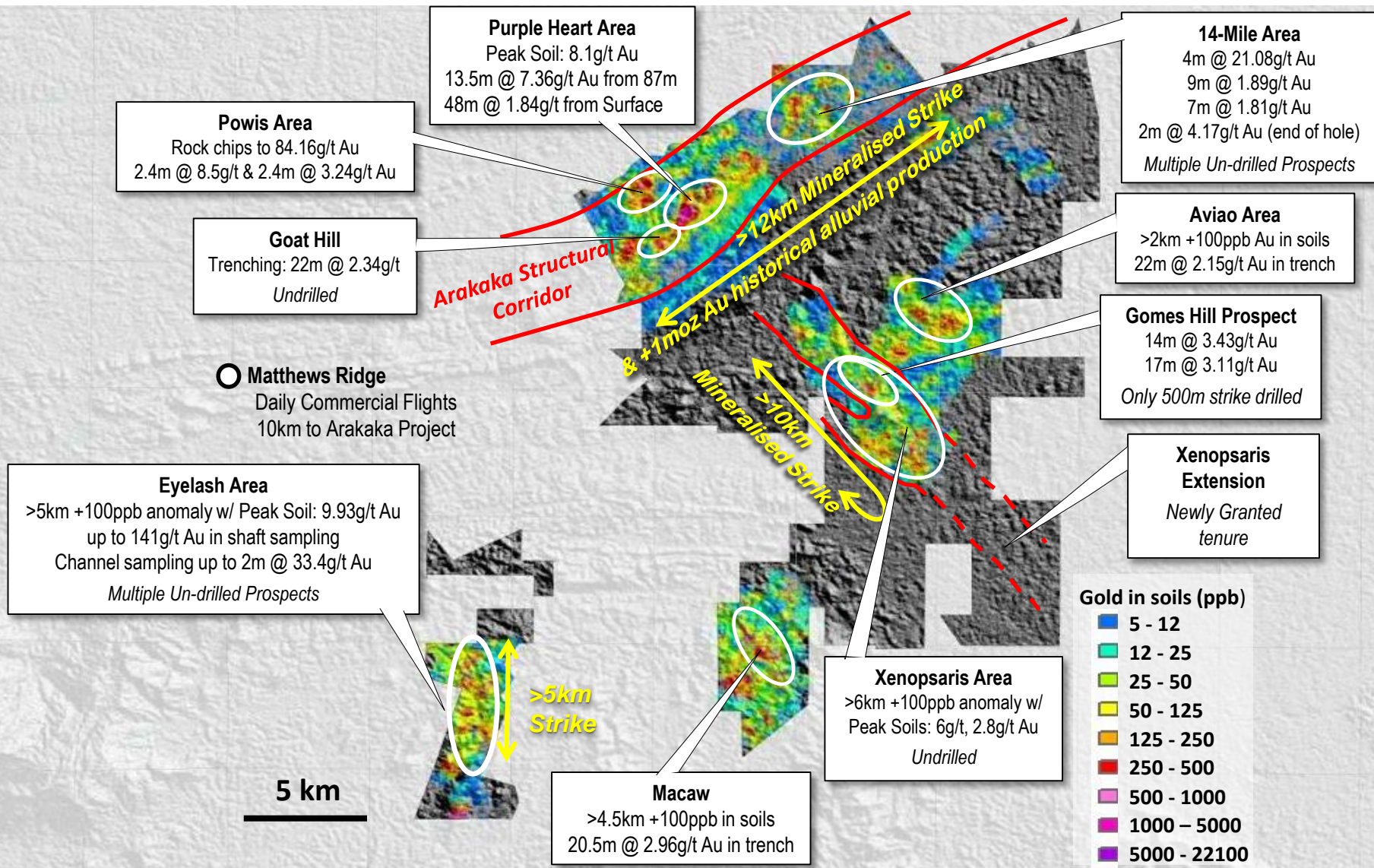


- Arakaka flights - approx. 50 mins from the Capital, Georgetown
- Daily commercial flights to Matthews Ridge, 10km from Arakaka Project
- All-season road network
- Monosse Exploration Camp rehabilitated and being utilised as base for regional exploration activities
- Deep water port at Port Kaituma, 15km from Arakaka Gold Project



# Regional Scale Land Position

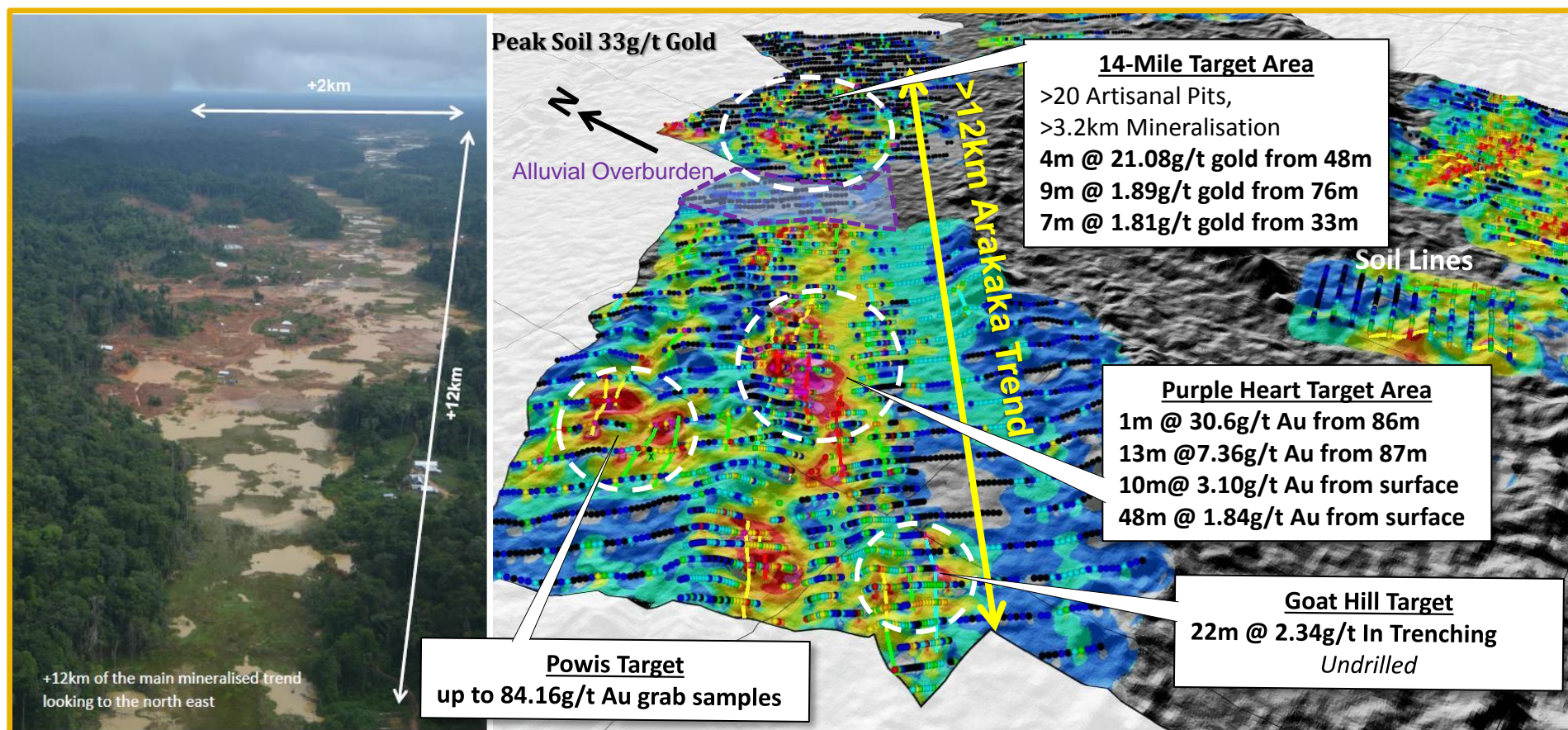
Multiple Target Areas defined targeting >1Moz Au Potential



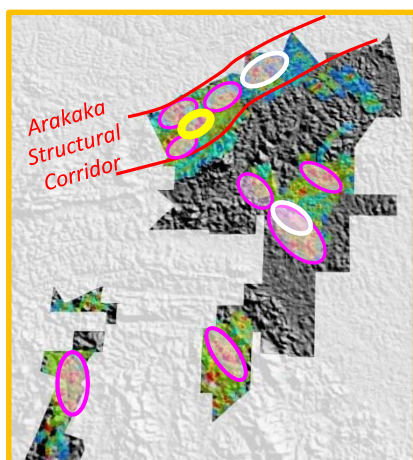


# Arakaka Main Trend Soils

- Arakaka Main Trend is host to five of the ten major target 'Areas' on the Arakaka Project
- Existing drilling confirms high grade gold zones within broad disseminated gold mineralisation
- >12km of near continuous +100ppb Au surface anomalism







# Purple Heart Area

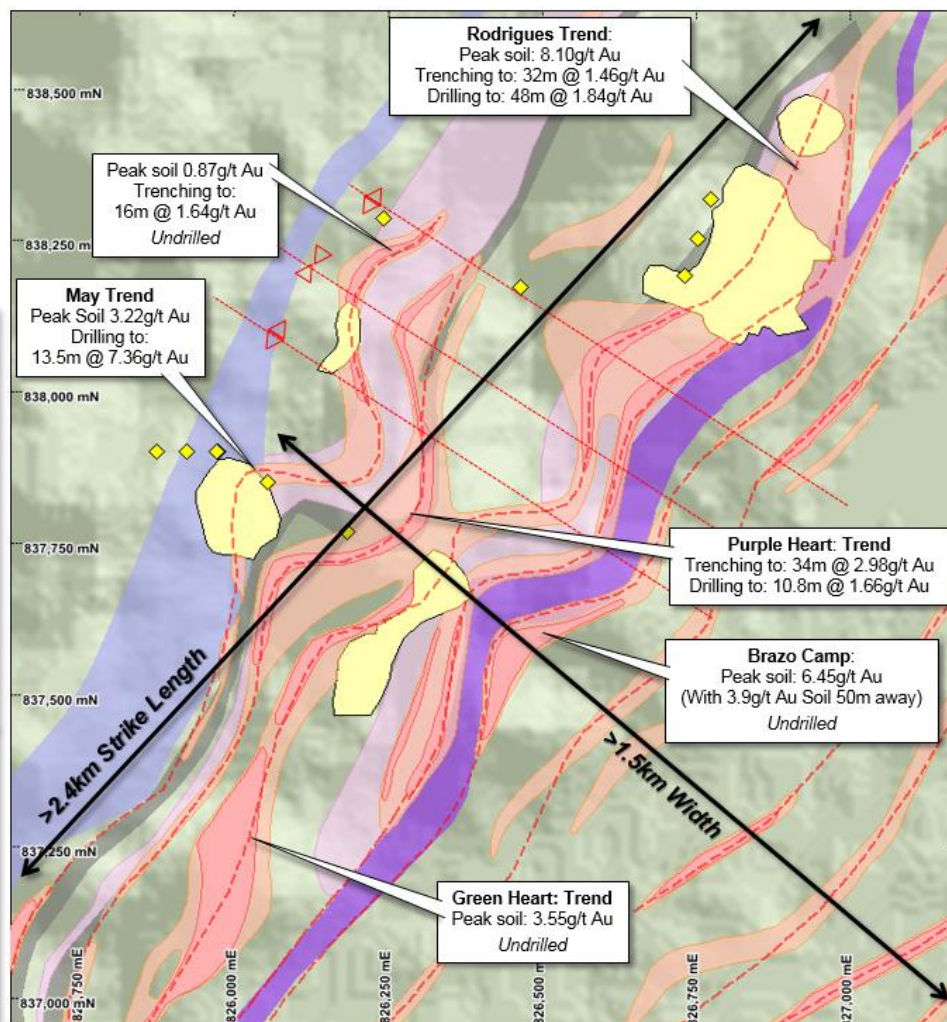
## Arakaka Main Trend

Dolerite  
 Carbonaceous Schist  
 Ultramafic Schist  
 Diorite  
 Arakaka Fm: Metaseds  
 Arakaka Fm: Phyllites

>500ppb Au in soils  
 >50ppb Au in soils

Anomalous Au Trend

Porknocker Pit  
 Diamond Drillhole



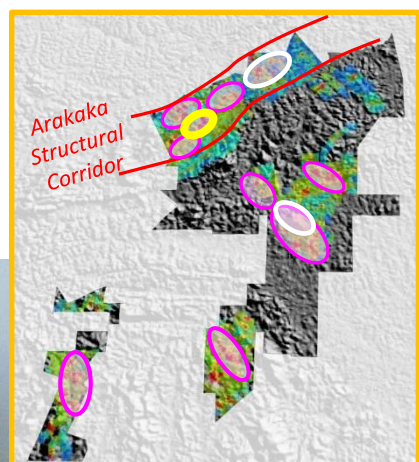
Undrilled Peak Soil Values; 6.45g/t, 3.9g/t and 3.55g/t Au

- Purple Heart comprised of multiple saprolite pits on hill side, constrained by alluvial cover
- Consistent Geology and mineralisation style >2.4km strike
- High strain zone, multiple fold hinges mapped
- Potential for bulk tonnage gold mineralisation
- Demonstrable High grade mineralisation
- Two Sections of drilling 750m apart return favourable intercepts with in-fill drilling required

**Purple Heart Target Area**  
Better Diamond Drill Intercepts Include;

13m @ 7.36g/t Au from 87m  
 10m @ 3.10g/t Au from surface  
 48m @ 1.84g/t Au from surface  
 1m @ 30.6g/t Au from 86m





# Arakaka Main Trend

## Purple Heart Area Saprolite Workings



Rodrigues Prospect,  
Purple Heart Target Area



Saprolite workings at  
Purple Heart Target Area



(View Looking East)

OPEN

Up to 48m @ 1.84g/t Au in  
Diamond Drilling

750m Undrilled

Up to 13.5m @ 7.36g/t Au in Diamond Drilling

OPEN

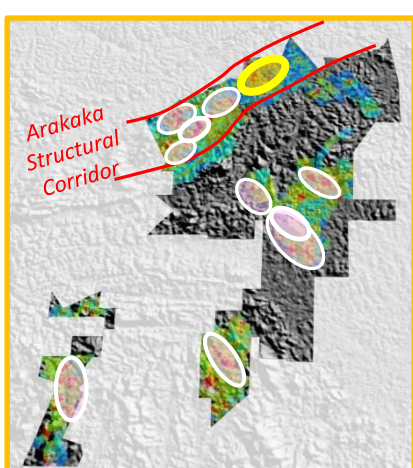
Sub-Parallel Anomalism  
Un-Drill Peak Soils (6.45, 3.55g/t Au)



Visible gold in quartz,  
Purple Heart Target Area

Two Sections 750m of drilling apart return favourable intercepts with in-fill drilling required with  
>2.4km long gold anomaly with >100ppb Au





# 14-Mile Area Arakaka Main Trend

## Gold Hill Prospect

Drilled, open ended gold mineralisation

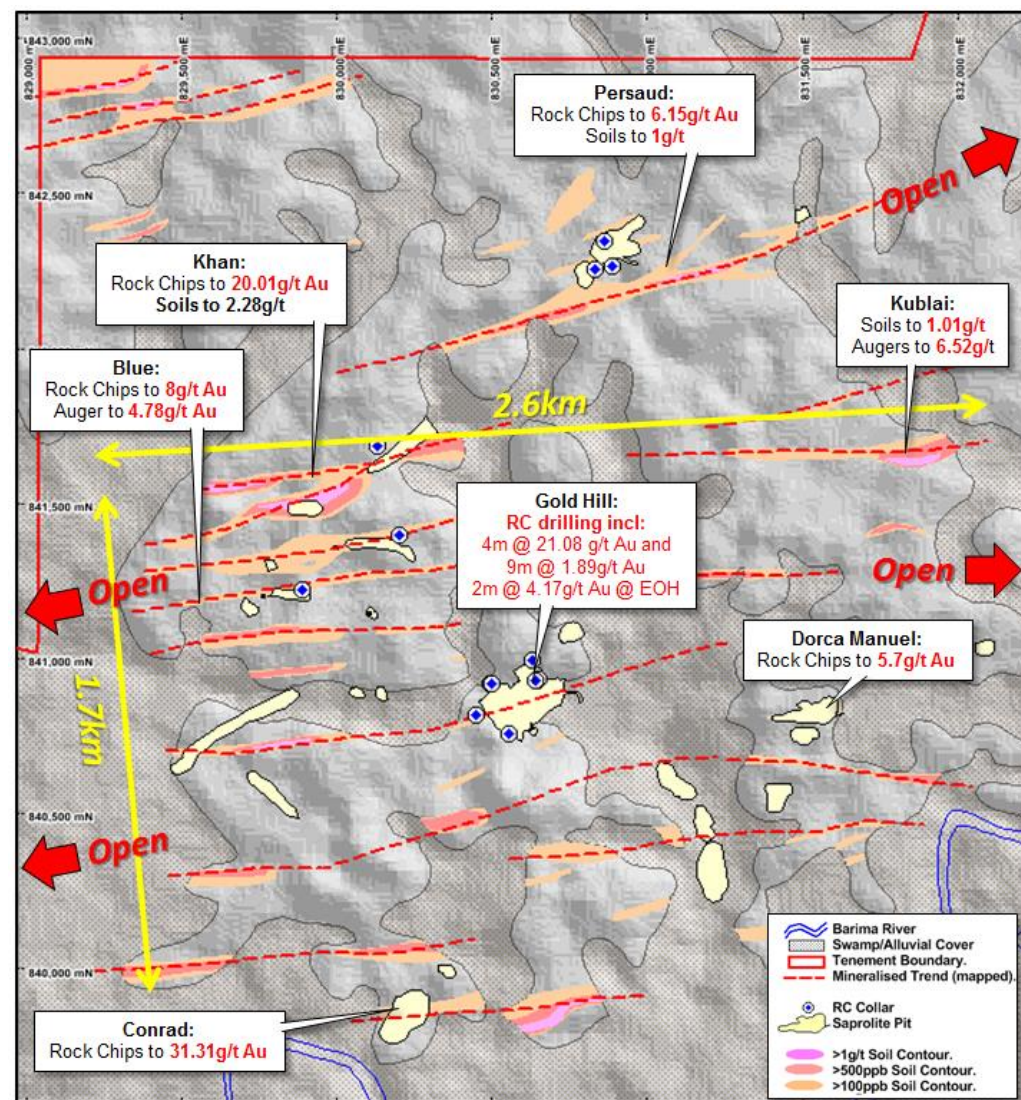
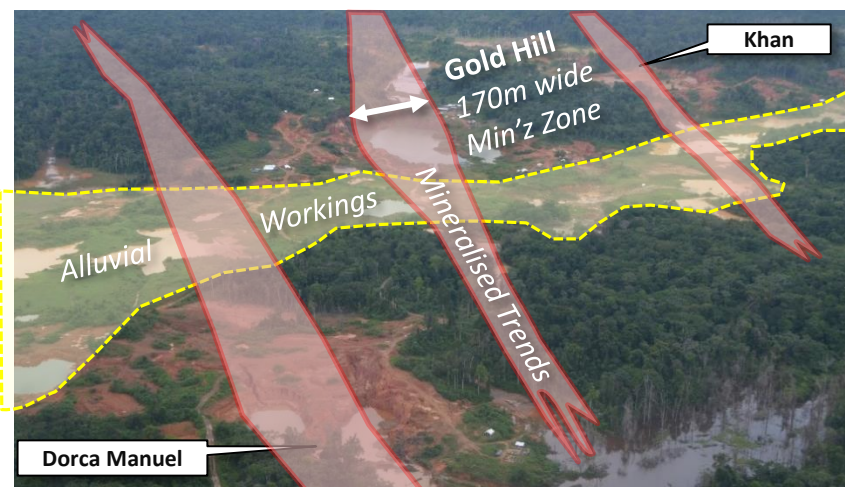
## Proof of concept in drilling

High grade veins associated with broader disseminated mineralisation for bulk tonnage targets

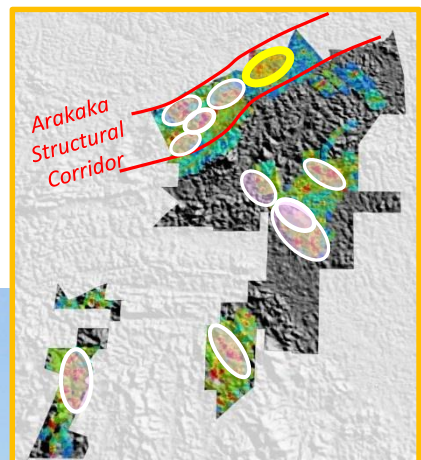
### 2014 RC results include

- 4m @ 21.08g/t Au from 48m
- 9m @ 1.89g/t Au from 76m
- 7m @ 1.81g/t Au from 33m
- 2m @ 4.17g/t Au end of hole - 113m

**Multiple Mineralised Trends with Multiple Undrilled Targets**







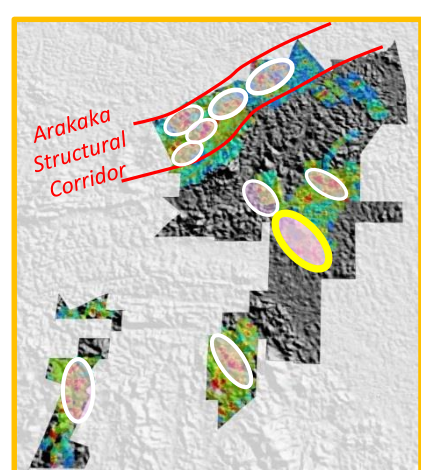
# Arakaka Main Trend

## Alicanto RC Drilling at 14-Mile



Gold Hill Saprolite Pit at 14 Mile Target Area





# Xenopsaris Area Gomes Trend

## Gomes Hill Prospect

Drilled, open ended mineralisation on 500m strike within the

## Xenopsaris Target Area's

Extensive corridor of un-drilled gold anomalism

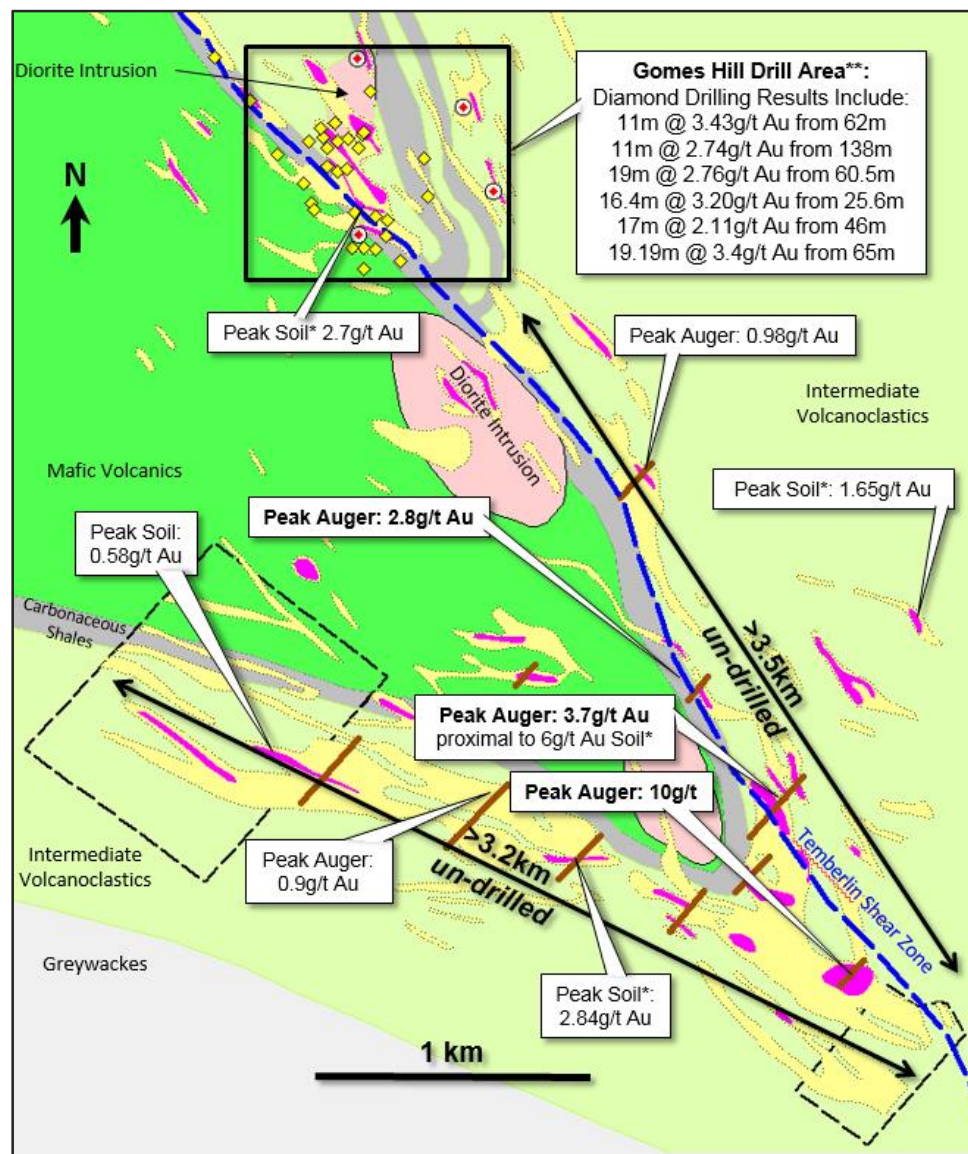
2015 Exploration includes auger sampling and extensions to open-ended soil anomalism

- Peak Auger Values: **10g/t, 3.7g/t, and 2.8g/t Au**
- Peak Soil Values: **6.9g/t, 2.09g/t, and 1.89g/t Au**
- >1.5km extension to anomalism in 2015, remains open ended

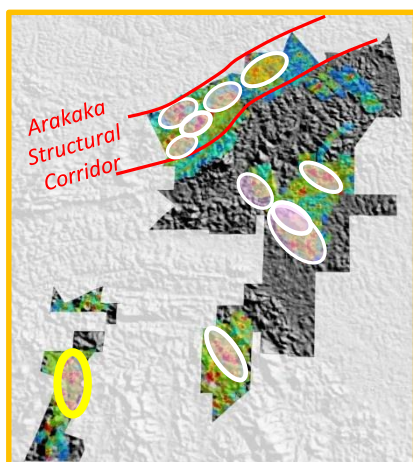


**>6km of high tenor Auger and Soil Anomalism (+100 ppb Au)**

## Undrilled







# Eyelash Target Area



**ALICANTO**  
MINERALS LIMITED



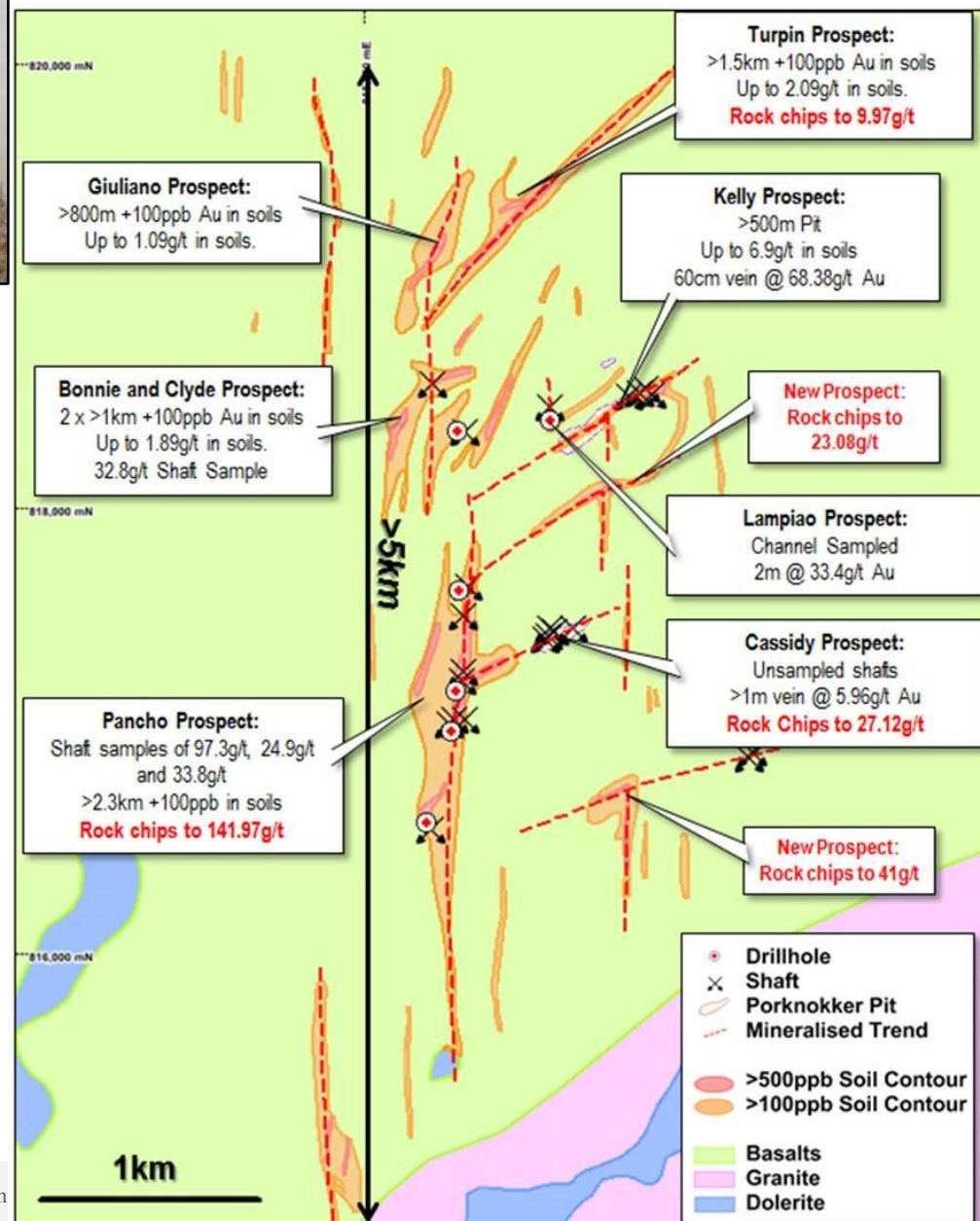
- >20km of alluvial placer workings sourced from Eyelash
- Multiple saprolite pits up to >600m long
- Numerous underground workings
- Peak Soil Values 6.9g/t, 2.09g/t, and 1.89g/t Au

142, 97.3, 68.3, 53.8 and 41g/t Au peak Rock Chips  
High grade channel samples, better results include;

- 33g/t Au over 2m
- 68.36g/t Au over 0.6m

- Visible Gold intersected in drill holes w/ assay results up to 8.87 g/t Au over 1.4m
- Limited drilling - Only five holes over multiple prospects

**Insufficient Drilling - High Grade targets  
Undrilled**



# Alicanto Corporate Snapshot



- Experienced Board and Technical Team - unique technical approach, proven exploration experience
- Acquisition has delivered an exceptional brownfields project, rated as one of the best in Guyana.



**Didier Murcia, Non-Executive Chairman**

Lawyer, +25years experience in corporate, commercial and resources law, including extensive experience in resource projects in Africa and South America



**Travis Schwertfeger, Managing Director**

Geologist, formerly with Newmont, +18 years experience in mining and exploration for gold on numerous projects throughout South & North America, Africa and Australia



**Matthew Bowles, Non-Executive Director**

+15 years experience in corporate finance, M&A and strategy in mining and resources, including emerging countries



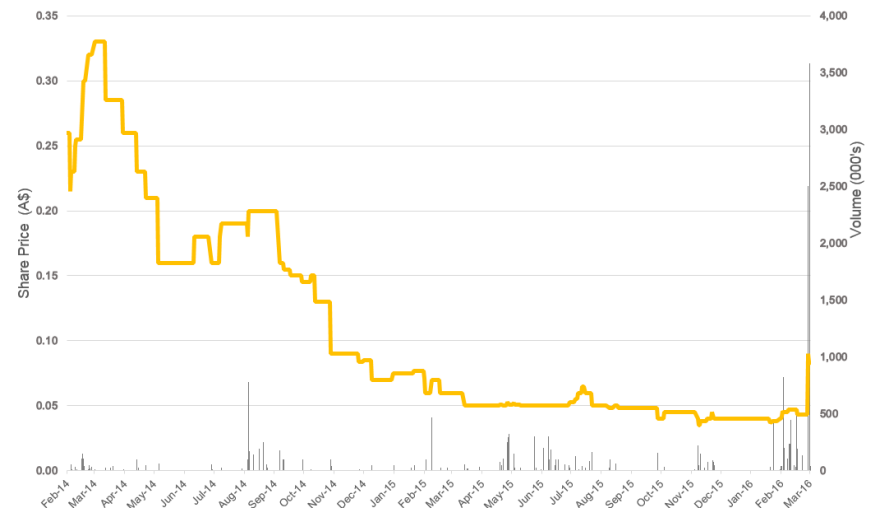
**Marcus Harden, Chief Geologist**

Geologist, Extensive gold and base metals exploration experience throughout Australia, West Africa and Asia. Previously the Principal Geologist for First Quantum Minerals and Gryphon Minerals in West Africa. University of Edinburgh graduate, first class honours degree in Geology.

## Steve Parsons & Hamish Halliday, Technical Consultants

Extensive corporate & technical experience in Australia and West Africa. Mr Parsons is the Founder and MD of Gryphon Minerals and Mr Halliday is the Founder and MD of Venture Minerals and former founder and MD of Adamus Resources.

<b>ASX Code:</b>	<b>AQI</b>
<b>Share on issue</b>	<b>57.7m</b>
<b>Options 7c/20c/30c</b>	<b>15.1m</b>
<b>Current Share Price</b>	<b>A\$0.09</b>
<b>Current Market Capitalisation</b>	<b>A\$2.3m</b>
<b>Top 20 Holders</b>	<b>+60%</b>
<b>Board &amp; Management</b>	<b>+28%</b>





# Arakaka

## Underexplored and undeniably rich in gold



- **Drilling to commence as soon as practicable**
- Barrick required to spend a minimum of \$1,800,000 USD in 2016
- Total funding requirement of **\$10,000,000 USD in four years** for Barrick to earn in to 65% interest
- Alicanto retains operation control in first half of Earn-in
- Arakaka Trend is one of the **oldest and most prolific gold districts in the Guiana Shield** with more than 1moz of artisanal gold production
- **Internationally Recognised Technical Team** - unique and innovative technical approach, with proven exploration experience and success.
- Tight capital structure, Top 20 shareholders hold over 58% with board and management over 28%



Gold Hill Saprolite Pit at 14 Mile Target Area

# Contact



**Registered Office**  
**288 Churchill Avenue**  
**Subiaco WA 6008**

**Telephone: + 61 8 6489 0700**  
**Facsimile: + 61 8 6489 0710**

**Email: [admin@alicantominerals.com.au](mailto:admin@alicantominerals.com.au)**  
**Website: [www.alicantominerals.com.au](http://www.alicantominerals.com.au)**

**Guyana Office**  
**63 Middle and Main Street,**  
**North Cummingsburg,**  
**Georgetown, Guyana**

**ASX Code | AQI**